



RAVINIA

An Advocate for Community Resources

Published by Friends of the Ravines (FOR)

Fall 2001

THE LEGACY OF CAMP MARY ORTON ON FLINT RUN RAVINE

by Sherrill E. Massey, Volunteer Archivist, Godman Guild

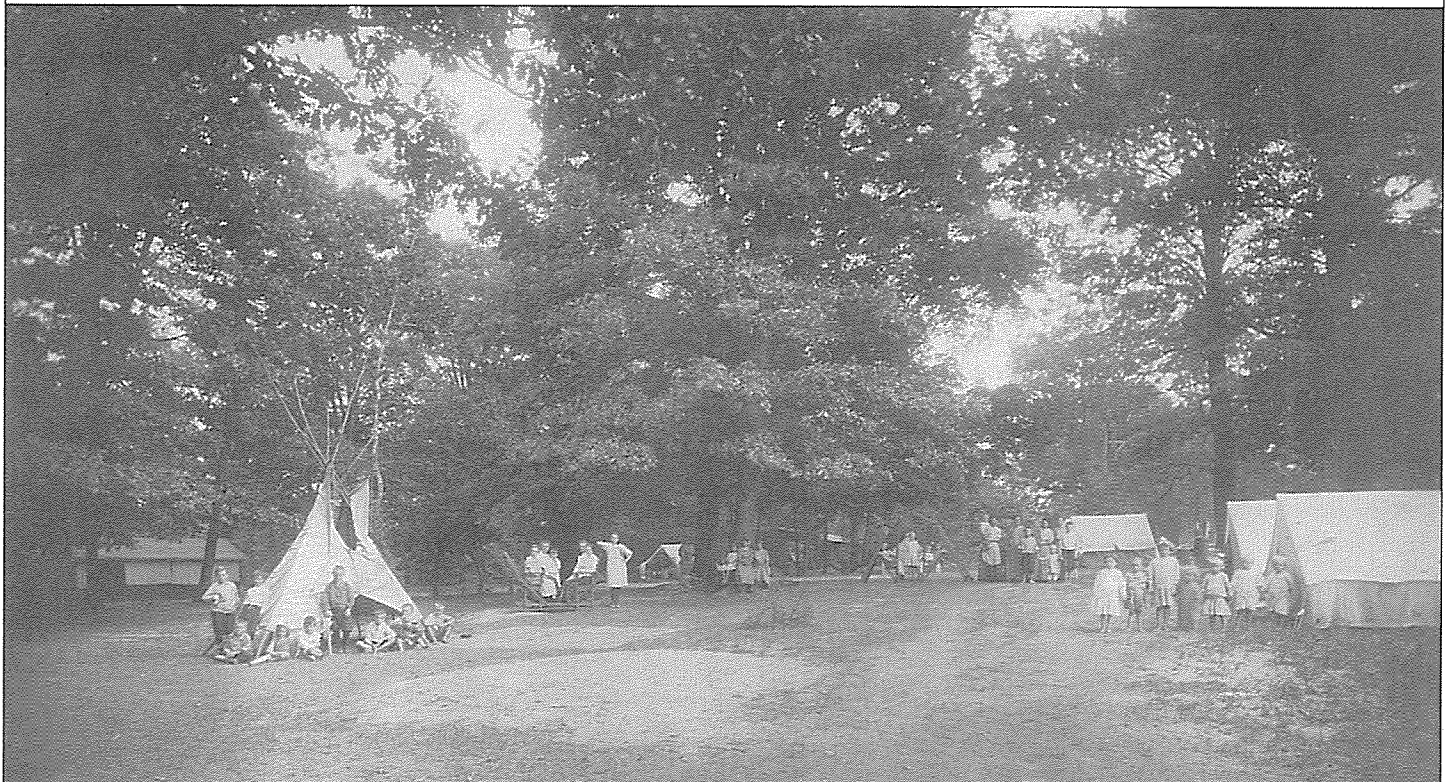
Camp Mary Orton is owned by the Godman Guild, a north side neighborhood settlement house founded in 1898. The Guild is a social service agency affiliated with the United Way of Franklin County. Camp Mary Orton is comprised of one hundred and sixty-seven acres north of Worthington in Sharon Township. Boundaries are the Olentangy

River, the Pontifical College Josephinum, North High Street, and on the north edge, a commercial and residential development, and Highbanks Metro Park. In 1998, the Guild, while retaining title to the land, sold a scenic easement to the Franklin County Metro Parks. This will allow Metro Parks to prevent any development in that easement and keep the

land in its natural state.

Annetta (Johnson) St. Gaudens owned the land where part of Camp Mary Orton now stands. It was given to her by her father Harvey Johnson, who, with his twin brother Henry C., founded and developed the village of Flint. As a child,

Continued on page 4



FROM THE CHAIR OF THE BOARD...

The past year has been a year of change for Friends of the Ravines. We have a new Board of Trustees which has met the fourth Thursday of every month since January 2001. During the spring months we mapped out goals for the year and then went into action.

We moved our post office box, updated our mailing list, updated our Website (<http://glenecho.anthill.com>), updated our publicity materials, and revised and passed new bylaws. We continue to oversee the Glen Echo Restoration Project. We are currently working on a revision of "A Resident's Guide to the Care and Maintenance of Urban Ravines."

In June Friends of the Ravines sponsored a Plant Walk on Overbrook Ravine, had a booth at Riverfest, and published a Riverfest Edition of *Ravinia*. In July we had a booth at Olentangy River Day.

In August FOR participated in the first meeting of the Central Ohio Watershed Council. COW Council is a forum for watershed groups to network, exchange ideas, strategies, and give each other support.

In September Friends of the Ravines on Glen Echo Ravine joined forces with Simply Living and Friends of the Lower Olentangy and launched a fall clean-up of Glen Echo Ravine from Glen Echo Park to High Street.

We celebrate the reappearance of the Walhalla Ravine Association and the formation of Friends of the Ravine on Glen Echo Ravine (FORGE).

We are grateful for our many friends who have helped us. We are especially thankful for the guidance and advice from the Clintonville Community Resource Center and we are appreciative of the Columbus Foundation's support.

The Board of Trustees thanks you for being friends of the ravines.

Martha Harter Buckalew
Chair, Board of Trustees



NEWS FROM THE RAVINES

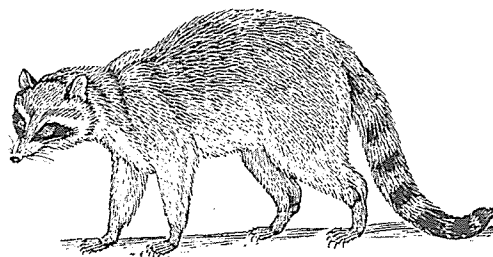
FRIENDS OF THE RAVINE ON GLEN ECHO (FORGE) is dedicated to the upkeep and restoration of Glen Echo Park and Ravine. It provides a forum to discuss neighborhood issues and is an advocacy group for Glen Echo Ravine. Recently FORGE applied for an urban infrastructure grant for improvements to the park. On Earth Day 2001 FORGE sponsored an annual cleanup of the entire ravine. During the summer FORGE launched a postcard campaign to city and sewer officials voicing concerns for the sewer rehabilitation projects scheduled for 2003. For more information about FORGE or to be placed on the mailing list, call Chris O'Leary at 261-7249 or email at olearyillustration@usa.net

WALHALLA RAVINE ASSOCIATION is forming a committee to develop a cohesive vision to address concerns which include roadway maintenance, erosion, invasive plant species, and traffic problems. Spring cleaning in Walhalla was a great success with over 40 neighbors participating. The fall ravine cleaning event is tentatively scheduled during October. The problem of speeders and vandals is being combatted by bombarding police with phone calls. For more information, visit the WRA website at <http://walhalla.listbot.com>.

OVERBROOK RAVINE residents contacted FOR about trees which have been chopped down on the city's easement. Columbus Parks and Recreation was contacted and has responded. Like other urban ravines, Overbrook is plagued with illegal dumping of trash and debris.

IUKA RAVINE PARK has a new stone and wood sign. The Iuka Ravine Association hopes its installation heralds more improvements. Plans include restoring the brick streets and upgrading the sewage and drainage system. The Department of Trade and Development and the Division of Engineering and Construction are currently reviewing the proposal and negotiating costs and scope of work. The IRA also led the effort to place street identification signs at the entrance to the alleys surrounding the ravine, thus allowing residents to now receive their pizzas while still hot.

COLUMBUS IS RAVINE RICH! The theme of this year's Clintonville tour of homes was ravines. Featured properties were located on Walhalla, Overbrook, Indian Springs Golf Course, Glen Echo and the ravine running between Webster Park and North Delta. One of our board members went on the Columbus Landmarks Foundation's Walking Tour of an Old Beechwood neighborhood which also contains a ravine. She is compiling a surprisingly long list of ravines in the city and beyond. There will be a Columbus Landmarks Foundation Walking Tour of Iuka Ravine on Saturday October 20th. For more information call 221-4508.



MEET THE BOARD OF TRUSTEES

CHAIR OF THE BOARD

Martha Harter Buckalew has been active in Friends of the Ravines since its inception. She served on the original advisory board and has contributed articles to *Ravinia*. She lives on Glen Echo Ravine and has been involved in its restoration since it began. She has served on the University Community Association Board and has held numerous district and state offices in the Ohio Music Teachers Association. She is a Nationally Certified Teacher of Music.

VICE-CHAIR OF THE BOARD

Andrea Gorzitze is a Volunteer and Education Coordinator for Franklin County Greenways at Mid-Ohio Regional Planning Commission. Her educational background combines biology and anthropology. She has conducted ecological research in Indonesia and taught biology, ecology, and physical anthropology at Columbus State Community College and at the DSCC branch of Park University. She has been working with watershed groups since April 2000. After spending 14 years in the Olentangy River watershed, she now lives in the Scioto River watershed.

SECRETARY

Sherrill Massey has an MFA in drawing and printmaking. Her drawings and prints have been exhibited regionally, nationally, and internationally. She has served as a trustee on numerous boards including The Italian Village Society, North Market Development Authority, and Godman Guild Association. She has been a resident of Columbus since 1974 and lives in Italian Village.

TREASURER

Jack Cooley is Assistant Vice Provost for Undergraduate Studies at The Ohio State University, with foreign policy as his academic field. He serves on the Clintonville Area Commission and is chair of the CAC Parks, Recreation, and Environment Committee. He has been a member of various civic organizations and has lived in Clintonville for 23 years.

MEMBERS AT LARGE

Barbara Scanlon is a two-year resident of Walhalla Ravine and an eight-year resident of Clintonville. She is one of two Vice Presidents of the newly revived Walhalla Ravine Association. Formerly she served as President of the Delawanda Residents Association in Beechwood.

Barbara brings an interest in promoting open communication among ravine groups and developing a united representation for ravine issues.

HONORARY MEMBER

Salle Cleveland, former editor of *Ravinia* and founder of Friends of the Ravines, now resides in Minneapolis, Minnesota. The Board of Trustees is grateful to Salle for her vision and her commitment.

If you are interested in serving on the Board of Trustees or know someone who would be a good candidate, please send a request for more information to:

FRIENDS OF THE RAVINES
Nominating Committee
PO Box 82021
Columbus, Ohio 43202

The Board of Trustees meets the 4th Thursday of each month in room 100 of Northwood High Building located at 2231 North High Street.

The Board will not meet in November and December of 2001. Meetings will resume on January 24, 2002.



THANK YOU.

The Board of Trustees of Friends of the Ravines gives warm thanks to the many special people who have shown their support.

SUPPORTERS OF RAVINIA

Pat Barron
Business Management
The Columbus Foundation
Ruth Cornelius
Susanne Fisher
Jeffri Frontz
Daryl Gillette
Godman Guild Association
Henry Leland
William Lucas
Joseph Motil
Laura Nordholt
Paul Sandstrom
Janet Weisent

Proof Reading - Patricia Miranda

FINANCIAL SUPPORT

The Columbus Foundation
Phyllis & William Havener Family

OPERATING ASSISTANCE

Clintonville Community Resources
Center
Mid-Ohio Regional Planning
Commission

TECHNICAL ASSISTANCE

Debbi Georg
John Husted
Mary Reese

LEGAL ASSISTANCE

Wendell F. Fisher, Esq.
Chris Hogan, Esq.

PLANT WALK GUIDE

Mark Balson

MEETING SPACE

Northwood High Building

GLEN ECHO RESTORATION

Columbus Parks and Recreation Dept.
City of Columbus Forestry Dept.
Volunteers

FOOD DONATIONS FOR VOLUNTEERS

Big Bear
Clintonville Community Market
Mill Street Bagels



Annetta St. Gaudens had the run of the farmland while growing up, and she loved the natural beauty of the land. She would make animals and other things from the clay she dug out of the ground and dreamed of becoming a sculptor.

Annetta graduated from the Columbus Art School (now Columbus College of Art and Design) at age eighteen. She attended the Art Students League in New York where she studied with Augustus St. Gaudens. St. Gaudens, a nationally known sculptor, recognized her talents and invited her to work as an assistant in his workshop at Cornish, New Hampshire. Augustus established an artists colony to produce numerous large scale art works commissioned for public buildings.

Annetta was commissioned to sculpt a marble bust of the first president of The Ohio State University, Edward Orton, Sr. Both Edward Ortons, Senior and Junior, were professors at The Ohio State University, state geologists, and trustees on the Godman Guild board. Edward Junior specialized in the clays of Ohio and set up the Ceramic Engineering Department at OSU. An OSU archival photograph shows the Senior Orton with his class on a ravine field trip. The ravine is not identified but could be one pictured at Camp Mary Orton. It is believed that it was through the Ortons' connection with Annetta St. Gaudens that the farmland became a camp for the guild.

Flint Run Ravine ran through the family farm to the Olentangy River. In the summer of 1909 the workers of Godman Guild brought together the first community of poor, working mothers of Flytown and their little children to experience a summer camp on the farmland. Pitched tents were shelters and a campfire was the cook stove.

Seventy Flytown women and children visited the camp in the era of the "fresh-air-movement" when the great outdoors was thought to have beneficial health effects, especially for those who lived in the crowded urban industrial section of early Flytown. Visitors would travel by the



1920 drawing of camp lands

C.D.&M. railroad to the Flint Station and ride the horse and wagon to the camp.

Annetta St. Gaudens is quoted:

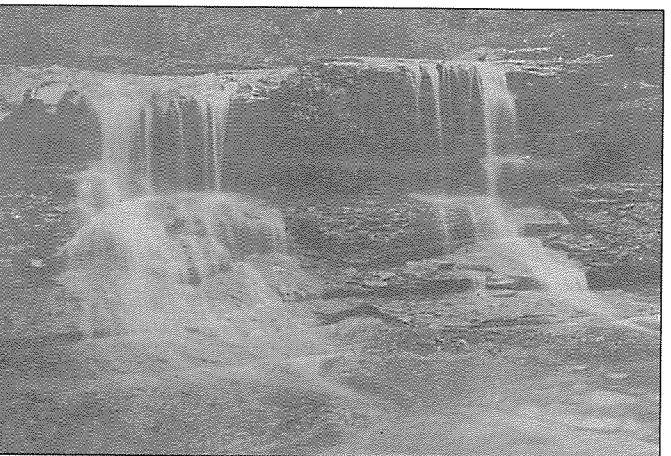
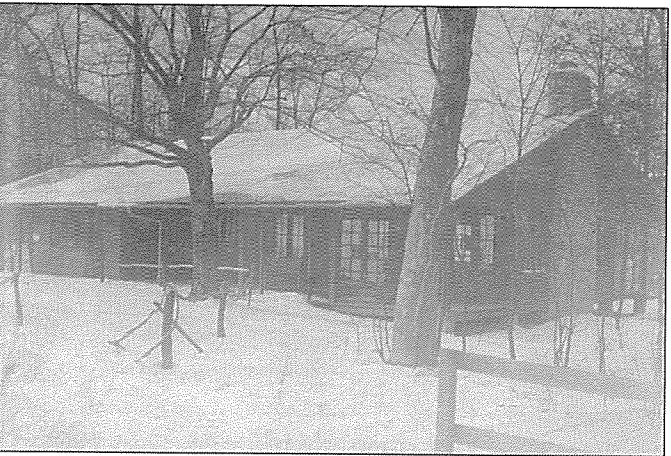
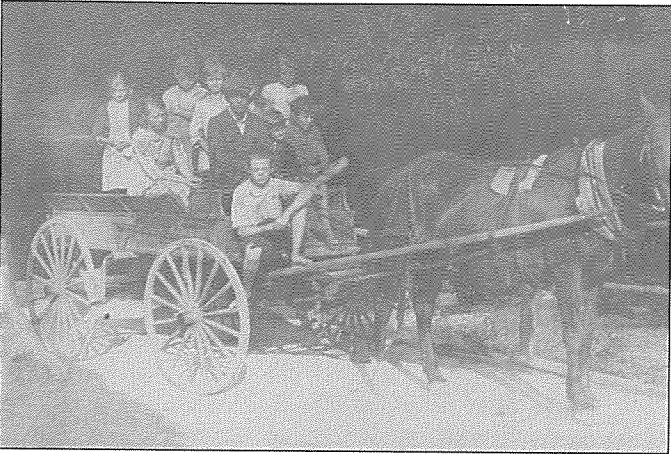
"...in this age of factories, spreading cities, overcrowding with emigrants from country life in foreign places, I would wish this farm to help satisfy the love for natural beauty, wild flowers and all wild animals, brooks, and trees and all outdoors and also to increase the interest in forestry, agriculture, and the conservation of natural resources and life. I especially desire the children of the city to have a chance for the health and noble independence of country life and toil."



Annetta St. Gaudens, sculptor and Camp Johnson donor, poses with a mask made at Godman Guild Camp, 1930s.

In 1910, at the age of forty-one, Annetta gave twelve acres of her family farm southeast of the Flint Ravine as a permanent camp for the Guild. It was named Camp Johnson. In addition to these acres, there was access to "...the High Street Road and the Olentangy River as well as garden land and the recreational use of the entire hill farm with its fine groves, wild meadows, thickets, ravines, brooks and river bank. The abundance of wild flowers, animals, insects, water creatures and birds as well as wild fruits, various trees and shrubs, the rocks, shale 'cliffs' and the many other natural attractions make Camp Johnson and the Farm a veritable wonderland for the child and the mother of back city streets."

Soon after Edward Orton, Jr. became a trustee of the Godman Guild, he saw the value and vision of acquiring contiguous properties for Camp Johnson. In 1920, he acquired and gave seventy-six acres of the remaining Johnson farm to the Godman Guild (ravine, woods, fields and river front). In 1922, Godman Guild trustee and OSU Professor Wilbur H. Seibert gave twelve acres comprised of High Street frontage from the Martha Sharp farm which adjoined the Guild holdings. In 1922, Erdis G. Robinson gave twelve acres on Little Round Stone Run on the Sharp farm, called Camp Robinson (boy's camp). In 1925 a group of Guild friends



gave most of the remaining Sharp farm, fifty-six acres in all, of meadow, thicket, forest and river front. This made a total acquisition of one hundred and sixty-seven acres for Camp Mary Orton.

Mary Anderson Orton was Orton, Jr.'s first wife, and he built the lodge as a memorial to her. A major campaign began in 1930 to build other buildings and provisions for the camp, including a swimming pool. The various camp names became the single name, Camp Mary Orton.

Many generations and thousands of people have attended this Flint Ravine forest camp since 1909. Low impact development at the camp has continued to be a compliment to the natural landscape. A 1975 Mid-Ohio Regional Planning Commission report produced by Elizabeth Gesner Sopko, who was then a state forester, described Camp Mary Orton area as "an outstanding natural area...of state significance and a prime candidate for preservation."

Over the years outside development interests have pressured the Godman Guild to sell the valuable nature preserve, especially when housing subdivision homes surrounding it sell for \$300,000 and up.

The Godman Guild Trustees have decided that Camp Mary Orton is too important in its mission to sell. The trustees underwent an extensive study with the community to plan for the future to make the camp more self sufficient. A development board was formed to pursue this effort. The camp is intended to provide programs to empower children and adults in their ability to achieve, lead others, and become reliable team players. "Ground-level" initiatives and the "high-ropes" course help build self-confidence and team spirit for near north side youth as well as adults from central Ohio's businesses, corporations and other organizations. Other services include nature studies through the Wilderness Discovery Center, Wilderness Bond, Summer Youth Empowerment Program, Adventure Academy, and the Leadership and Challenge Program, as well as services for special events, private parties and picnics.

By incorporating the guardianship of the one hundred and sixty seven acres of Flint Run Ravine into its mission, the Godman Guild has extended its humanitarian vision. Preserving this natural resource dramatically broadens the Guild's scope of social services.

Annetta married Louis St. Gaudens, the younger brother of Augustus. She is featured in the book, *American Women Sculptors*, by Charlotte Streifer Rubenstein. That work is now located in the OSU Orton Hall Library.

Flytown was located in the Short North of Columbus. Its boundaries were Goodale, Spruce, Denison, and the Olentangy River.

Photos from top:

With lunches packed, campers get off the train at the C.D. & M. (Columbus, Delaware, & Marion or Interurban) station at Flint to go to Camp Johnson in 1920.

Campers were met at the station by the "camp auto mobile, Faithful Bill," a horse and wagon, for the ride to camp.

Camp Johnson dining room

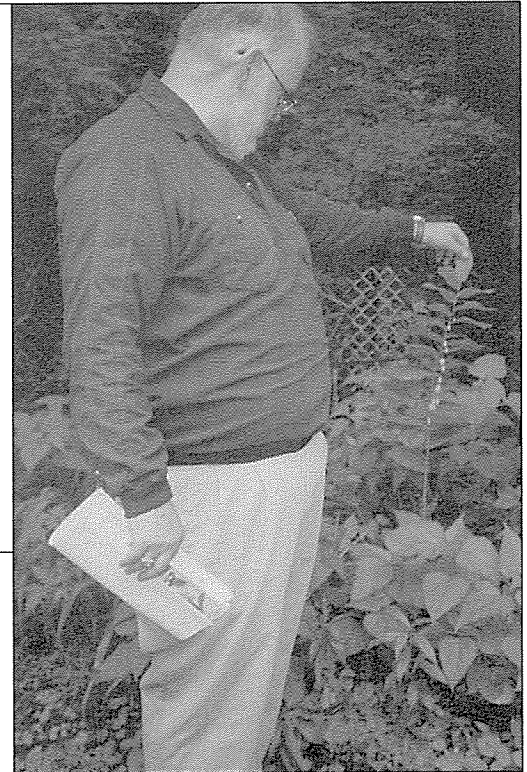
Waterfalls



CHRIS O'LEARY APPOINTED GLEN ECHO PROJECT DIRECTOR

The Board of Trustees of Friends of the Ravines has selected Chris O'Leary to replace Salle Cleveland as Project Director for the Glen Echo Restoration Project. Chris, who lives on Glen Echo Ravine, has been an active participant in the volunteer crews that began the work on the north slope in spring of 2000. In addi-

tion, he currently is coordinator of Friends of the Ravine on Glen Echo (FORGE) and has helped organize ravine residents who are concerned about the upcoming replacement of the sewer lines which run under the creek bed of Glen Echo stream. Professionally, Chris is a freelance illus-



RAVINE PLANT WALK

Mark Balson, an avid amateur botanist, shows an excellent specimen of Solomon's Seal to participants at the June 4 Friends of the Ravines Plant Walk.



GLEN ECHO RESTORATION UPDATE

The Glen Echo Restoration Project is slated for completion in the spring of 2002. Friends of the Ravines has a contract with the Civilian Conservation Corps to complete the heavy work of securing logs and back filling the gabions with topsoil. The final phase of the project includes constructing a split rail

fence halfway up the slope and making a clearly defined path on the northern work area. We will be calling for volunteers to complete planting the restored areas in the fall and spring. Look for news from FOR in your neighborhood newspaper.



FORGE BEGINS DIALOGUE WITH SEWAGE OFFICIALS

Over the next few years the City of Columbus will be rehabilitating old sewer lines. Friends of the Ravine on Glen Echo has been in dialogue with sewer officials over the summer. The 60 year old sewage pipe that runs the length of the ravine in many areas is buried directly underneath the Glen Echo Stream.

We are communicating with the city and urging that these environmentally sensitive areas be protected from disruptive utility activity.

Renovating this line could cause extensive damage to the ravine. FORGE's goal is to have the old line shut down and reroute the line under a city street where it can be more easily accessed should it need to be serviced.

Friends of the Ravines is concerned about all of

the ravines which have sewer lines running through them. We are communicating with the city and urging that these environmentally sensitive areas be protected from disruptive utility activity. If you have questions, call Laura Young Mohr at the Public Information Office for the Department of Public Utilities Sewerage and Drainage Division at 645-2123.



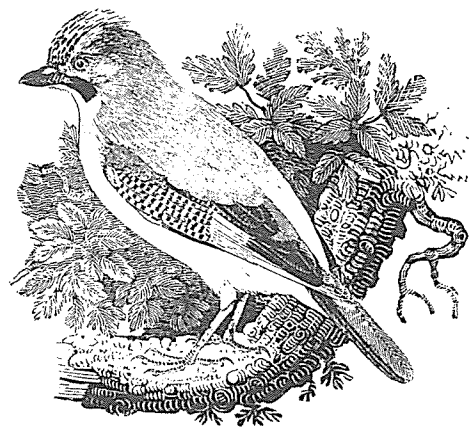
GLEN ECHO BIRD WATCHER'S LIST

A Cliffside Drive resident recorded this list of birds that were sighted in Glen Echo Ravine in the past year.

Golden-crowned Kinglet
Acadian Flycatcher
Rufous-sided Towhee
Phoebe
Wood Duck
Yellow Rump Warbler
Pine Warbler
Yellow Warbler
Nashville Warbler
Swainson's Thrush
Cat Bird
Black-Throated Green Warbler
Bay Breasted Warbler
Black and White Warbler
Tree Swallow
Blackpoll Warbler
Red-shouldered Hawk
Oriole
American Redstart
Ruby-throated Hummingbird
The family of Screech Owls which nested in a sycamore tree in Glen Echo Park left their nest in mid-April.

A nearby neighbor added the following birds sighted in or adjacent to Glen Echo:

Mallard
Cedar Waxwing
Ovenbird
Northern Cardinal
Red Tailed Hawk
Rough Legged Hawk
Tufted Titmouse
Black Capped Chickadee
House Wren
Red Bellied Woodpecker
Downy Woodpecker
Hairy Woodpecker
Cooper's Hawk
Hermit Thrush
Common Grackle
Brown Headed Cowbird
Mourning Dove
American Gold Finch
House Finch
Yellow Shafted Flicker
American Robin
American Crow
White Capped Sparrow
House Sparrow
English Sparrow



Blue Jay
Northern Mockingbird
Brown Creeper
White-Breasted Nuthatch
Slate Colored Junco
White Throated Sparrow
Goatsucker
Chimney Swift

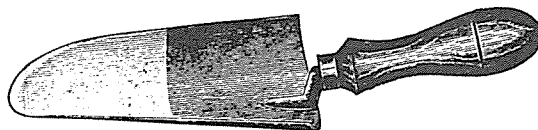
Just imagine! Over 50 species sighted only a few miles from downtown Columbus in a ravine that stretches from I-71 to the Olentangy River.



HORTICULTURE AND THE ENVIRONMENT

Landscape horticulture involves both growing trees, shrubs, vines, ground covers and herbaceous perennials and using them in designed aesthetic environments. Designed environments are not just pretty. They add functionality by modulating temperature, abating noise, reducing glare, and increasing privacy and security.

Although closely associated with the art of gardening, landscape horticulture also involves the science of plants. Landscape horticulturists must know plants' optimal growing conditions; how



plants grow, develop, reproduce, and adapt to different environments; plants' relationships with other organisms; and the artistry and creativity of landscape design and manipulation. Landscape horticulturists apply this knowledge to enhance our quality of life by developing and managing our environments.

A heightened awareness of our impact

on the environment has resulted in the development of landscapes that enhance the relationships between human-made and natural areas. Industry professionals are committed to stewardship, working to pass on to future generations a healthy, sustainable environment and an appreciation for the protection and management of natural ecosystems.

Adapted from The Major Series of The Ohio State University on the College of Food, Agricultural, and Environmental Sciences with the permission of the Department of Horticulture and Crop Science.



FRIENDS OF THE RAVINES WANTS YOU!

Yes! I want to be a friend of the ravines. Please call me when you need volunteers to help with mailings, plantings, or cleanups. In addition I have special skills and expertise to offer:

Name_____

Street_____

City_____State_____Zip_____

Phone_____

E-mail_____

Mail to:
Friends of the Ravines
P.O. Box 82021
Columbus, Ohio 43202

Martha Harter Buckalew
Chair, Board of Trustees
e-mail: mhbuckalew@aol.com

Ravinia is the official publication of
Friends of the Ravines

CONTRIBUTORS

Dianne Blankenbaker
Martha Harter Buckalew
Sherrill Massey
Christopher O'Leary
Linda Ridihalgh

Ravinia is funded in part through a Conservation Grant from the Catherine Hislop Fund of the Columbus Foundation. The purpose of Friends of the Ravines is to foster the protection and restoration of the ravine areas through community education and involvement in their conservation.

Submissions and suggestions are welcome

FRIENDS OF THE RAVINES BOARD OF TRUSTEES

Martha Harter Buckalew
Jack Cooley
Andrea Gorzitze
Sherrill Massey
Barbara Scanlon

e-mail: mhbuckalew@aol.com

Ravinia
P.O. Box 82021
Columbus, Ohio 43202